



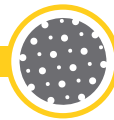
*Our Latest Innovation*

*in Hernia Repair*

# SurgiMend<sup>®</sup> MP

Collagen Matrix for Soft Tissue Reconstruction

**INTEGRA**  
LIMIT UNCERTAINTY



# PERFORATIONS

**SurgiMend® MP** is a 2mm thick acellular collagen matrix featuring a macroporous design that facilitates fluid drainage. SurgiMend MP provides the strength and structural support for complex hernia repair.



**Perforations** in SurgiMend MP facilitate fluid drainage, playing an important role in hernia repair.



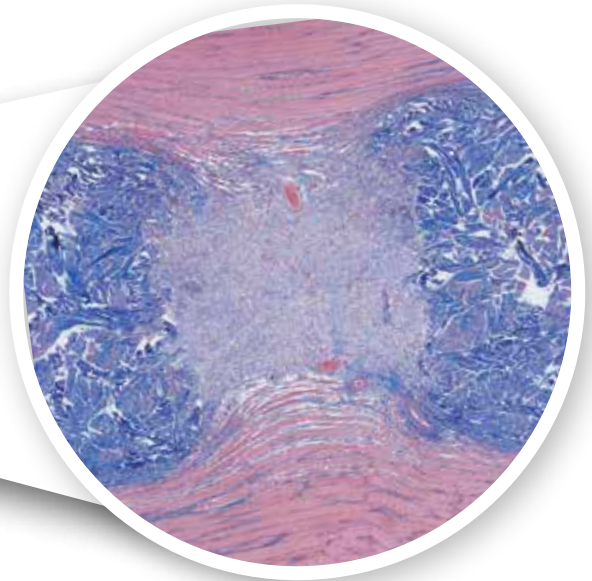
# TISSUE INTEGRATION

Why settle for resorption or encapsulation when you can have tissue integration?



Perforations in SurgiMend MP allow for tissue revascularization and integration.<sup>1</sup>

Image depicts cellular repopulation and revascularization in a small animal model, featuring a 2mm thick piece of SurgiMend with perforations.



Histological image of SurgiMend MP in a small animal intra-muscular implant model at 2 weeks.<sup>1</sup>

Above is a trichrome stained histological section of perforated SurgiMend (dark blue) implanted in a muscle (red). The perforation is filled with cells, blood vessels, and newly deposited host collagen.

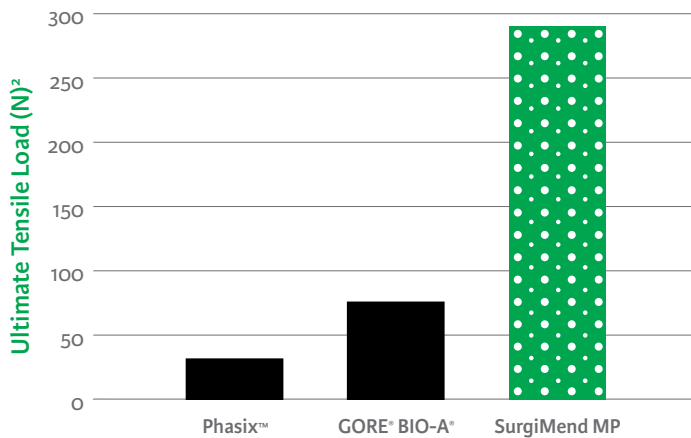




# STRENGTH

**Surgimend MP strikes the right balance of biologic properties and strength.**

In tensile strength testing, SurgiMend MP has been shown to be more than **3X stronger** than Phasix™ and GORE® BIO-A® and is not made of synthetic polymers.<sup>2</sup>

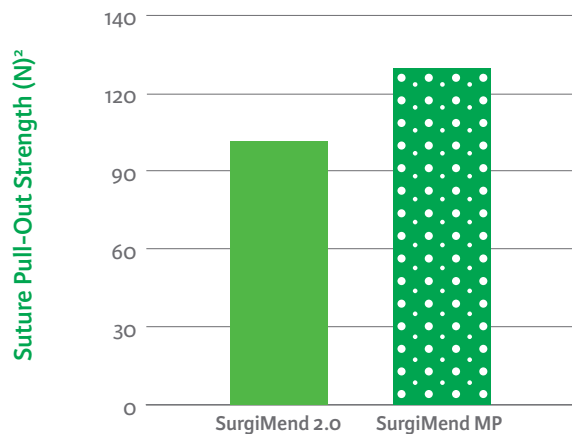


*Tested via ASTM D638 Type IV dogbone, 13 mm in width*

Even with numerous perforations, SurgiMend MP has comparable ultimate tensile strength to non-perforated porcine dermal matrices because of the inherent advantages in choosing bovine dermis as a source material.<sup>2</sup>

## Surgimend MP

- ✓ Even greater suture pull out strength than non-perforated SurgiMend, when stitched through a hole at least 5mm from the edge.<sup>2</sup>







# PRODUCT DETAILS

## At-a-Glance

Composition	Native, bovine dermal tissue
Collagen source	Bovine dermis
Appearance	Flat, perforated, dry sheet of uniform thickness and color
Thickness	2 mm*
Storage	Room temperature storage
Chemical crosslinkers	None
Rehydration	Approximately 60 seconds in room temperature saline <sup>^</sup>
Intraoperative handling	Can be trimmed to size (wet or dry) and placed in any orientation, with either side up
Viral safety	Manufacturing process includes validated viral-inactivation steps
Transmissible Spongiform Encephalopathy (TSE) Safety	TSE safety certification by European Directorate for the Quality of Medicines; source tissue selected and processed in accordance with strict US and International regulatory requirements
Sterilization	Via exposure to ethylene oxide gas; sterility assurance level of $10^{-6}$ with undetectable ethylene oxide residuals

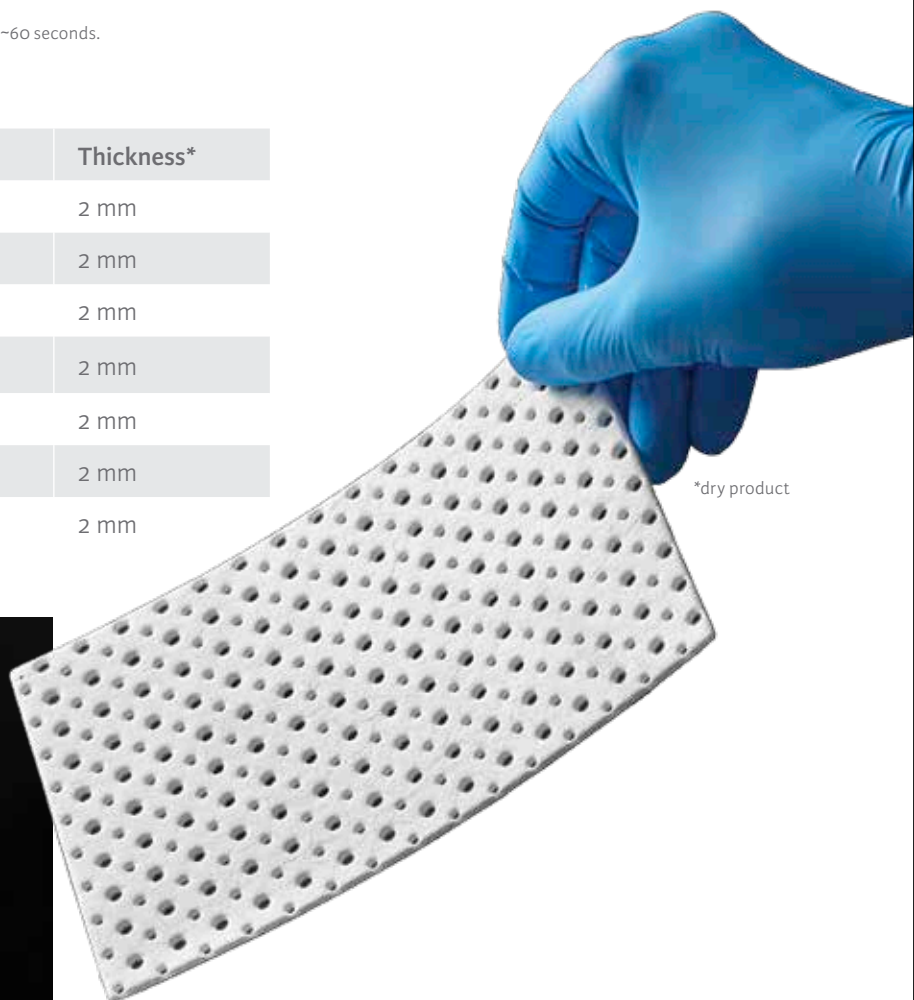
\*Nominal

<sup>^</sup>SurgiMend MP is specified to hydrate in  $\leq 3$  minutes; typically, it hydrates in  $\sim 60$  seconds.

## Ordering Information

Reference	Description	Thickness*
606-206-001	10 cm x 15 cm perforated	2 mm
606-206-004	16 cm x 20 cm perforated	2 mm
606-206-003	13 cm x 25 cm perforated	2 mm
606-206-002	20 cm x 20 cm perforated	2 mm
606-206-005	20 cm x 25 cm perforated	2 mm
606-206-006	20 cm x 30 cm perforated	2 mm
606-206-007	25 cm x 40 cm perforated	2 mm

\*Nominal



## Indications

SurgiMend is intended for implantation to reinforce soft tissue where weakness exists and for surgical repair of damaged or ruptured soft tissue membranes.

### SurgiMend is specifically indicated for:

- Plastic and reconstructive surgery
- Muscle flap reinforcement
- Hernia repair including abdominal, inguinal, femoral, diaphragmatic, scrotal, umbilical, and incisional hernias

## Contraindications

SurgiMend should not be used for patients with a known history of hypersensitivity to collagen or bovine products.

## Warnings and Precautions

**CAUTION: Federal (USA) law restricts this device to sale by or on the order of a licensed healthcare practitioner.**

- Fluid flows through the fenestrated and perforated product faster than through solid product.
- Meshing of fenestrated or perforated product is not recommended.
- Do not expose to chemicals or substances other than sterile, room temperature 0.9% saline.
- Excessive heat can damage collagen. Do not hydrate in 0.9% saline warmed above room temperature. If, when hydrated, the product shrinks in size, DO NOT use the product as it may be damaged.
- SurgiMend should be used with caution in regions where infection exists or is suspected.
- Treat any existing infection appropriately. If used in contaminated or infected wounds, collagen-based implants can weaken or break down.
- SurgiMend should be used with caution in surgical locations where the product may be exposed to stomach and/or intestinal contents. Collagen-based implants can be susceptible to degradation by digestive enzymes and conditions of acidic (low) pH.
- SurgiMend is for single patient use only; do not resterilize as this may damage SurgiMend.
- SurgiMend has not been evaluated for use in pregnant women.
- The patient's medical condition may adversely impact healing of the deficient tissue. These conditions may include, but are not limited to: smoking, diabetes, insufficient blood supply at the implant site, and exposure of the implant site to radiotherapy.

## References

1. Data on file, Internal testing PDR 198
2. Data on file, internal testing PDR 231

Availability of these products might vary from a given country or region to another, as a result of specific local regulatory approval or clearance requirements for sale in such country or region.

- Non contractual document. The manufacturer reserves the right, without prior notice, to modify the products in order to improve their quality.
- Warning: Applicable laws restrict these products to sale by or on the order of a physician.
- Consult product labels and inserts for any indication, contraindications, hazards, warnings, precautions, and instructions for use.

### For more information or to place an order, please contact:

USA 877-444-1122 i 866-800-7742 fax  
International +1 617-268-1616 i + 1 617-268-3282 fax  
[surgimendsales@integralife.com](mailto:surgimendsales@integralife.com)

